

Exploring the Peach State Pathways
7th Grade Advisement Activity
Estimated time: 30 Minutes

Georgia Teachers-As-Advisors Framework**Goal 7-1.1 - Create, manage, and enhance a Peach State Portfolio.**

- a. Expand information in one's Peach State Portfolio (which includes the Peach State: Program of Study).
- b. Examine Georgia's Peach State Pathways (concentration areas and career pathways)

Objectives:

- Students will become more familiar with Peach State Pathways: Program of Study

Materials:

- Handouts, Peach State Pathways Chart and Healthcare Science Occupational Chart and worksheet (print front and back to save paper).
- Paper

Activity:

1. Say: Hello! Welcome to advisement. Today we are going to learn more information about Peach State Pathways. Information about the pathways can assist you in the 8th grade when you will be asked to choose coursework at the high school. Your high school advisor or counselor will create a 6-year plan with you---9th, 10th, 11th, 12th, 13th (postsecondary)and 14th years (postsecondary). The question, "What do you want to do when you grow up?" will be an important question. Your answer will help the counselor/advisor assist you with your planning.

2. *Distribute the handouts: Peach State Pathways Chart and Healthcare Science Occupational Chart .*

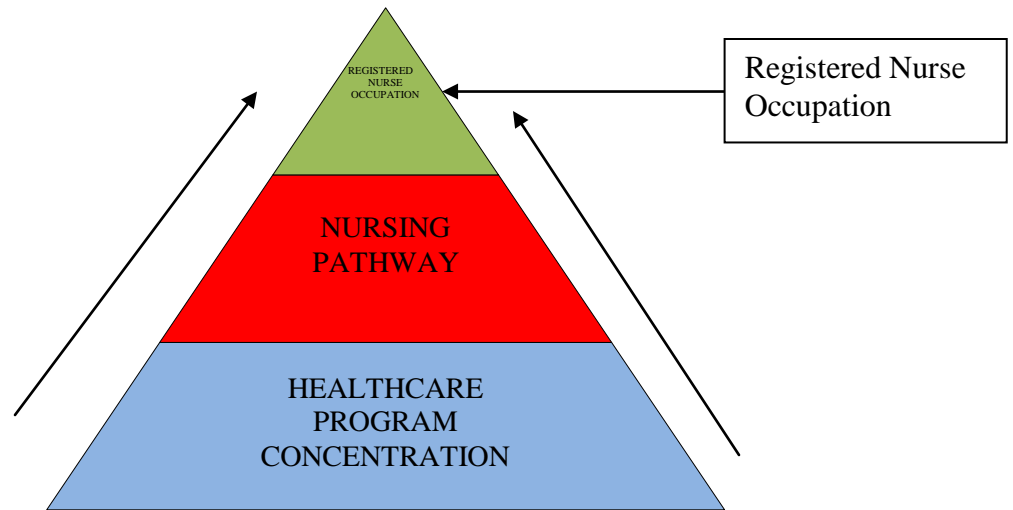
Say: You should have three charts/documents. Name each document to ensure each student in your advisement has the documents. Say: We will be using these documents to become more familiar with Georgia's 11 PROGRAM CONCENTRATIONS AND PEACH STATE PATHWAYS. The pathway program is a tool which organizes broad areas of occupations and pathways which represent sub-groups of occupations with common knowledge and skills. Georgia Peach State Pathways are usually represented by three sequenced courses that can begin in the 9th grade and continues either into the world of work or additional postsecondary educational opportunities. Ask students to look at the handout showing the 11 PROGRAM CONCENTRATIONS AND PATHWAYS. Hold up your copy.

3. *Ask: What are Georgia's 11 Program Concentrations? Say: List these in your notebook or on a sheet of paper. Allow time for students to write the titles of each Program Concentration (located in the outer ring). Say: Now, choose one of the Program Concentrations that might interest you. Then read silently the title of each pathway located in the inner ring. Allow time for students to read. Say: Beside the Program Concentration that you selected, write one pathway that might interest you.*

4. *Say: Does your high school offer this pathway? You may want to talk with your counselor to determine which pathways your high school offers. Most high schools in Georgia offer those pathways that offer the most job opportunities in the surrounding area. If the high school does not offer the pathway you selected, you will spend more of your time looking for the best possible postsecondary route you can take. I can assist you with that process if you need me.*

Do you have any questions about the chart you just briefly explored? Take this chart home and share this with your parents.

5. *Say: Now, let's look at the handout titled HEALTHCARE SCIENCE. This document represents the pathways in the Healthcare Science concentration with matching occupational opportunities. Information similar to this is located on GAcollege411 under the CAREER PLANNING tab. On your pyramid worksheet, using HEALTHCARE SCIENCE as the program concentration, choose a pathway that might interest you from the Healthcare Science PROGRAM CONCENTRATION Occupational Chart such as Nursing.*



6. *Say:* The arrows pointing up on each side of the pyramid indicates that your choices are beginning to narrow from BROAD to less BROAD to very SPECIFIC. Do you see that progression?

7. *Say:* Great! I hope you will continue to explore the concentrations and pathways in GAcollege411. See you the next time we meet. If you need some additional help, you know where to find me. Remember to share this information with your parents or family. Have a great day.

HEALTHCARE SCIENCE PROGRAM CONCENTRATION- *The planning, managing, and providing of services that promote health, wellness and diagnosis as well as treat injuries and diseases.* <http://www.careervoyages.gov>

Pathways	Therapeutic Services- Nursing	Therapeutic Services- Medical Services	Therapeutic Services- Emergency Services	Health Informatics	Biotechnology Research & Development	Diagnostic Services	Physical Medicine	Personal Care Services- Cosmetology
*SAMPLE Career Occupations	<ul style="list-style-type: none"> ◆ Anesthesiologist Assistant ◆ Art / Music / Dance Therapist(s) ◆ Athletic Trainer ◆ Audiologist ◆ Certified Nursing Assistant ◆ Chiropractor ◆ Dental Assistant / Hygienist ◆ Dental Lab Technician ◆ Dentist ◆ Dosimetrist ◆ Exercise Physiologist ◆ Home Health Aide ◆ Kinesiotherapist ◆ Licensed Practical Nurse ◆ Massage Therapist ◆ Medical Assistant ◆ Occupational Therapist / Asst ◆ Ophthalmic Medical Personnel ◆ Optometrist ◆ Orthotist/Prosthetist ◆ Physical Therapist / Assistant ◆ Physician (MD/DO) ◆ Physician's Assistant ◆ Psychologist ◆ Recreation Therapist ◆ Registered Nurse ◆ Respiratory Therapist ◆ Surgical Technician ◆ Veterinarian / Vet Tech 	<ul style="list-style-type: none"> ◆ Acupuncturist ◆ Social Worker ◆ Speech Language Pathologist ◆ Mortician ◆ Pharmacist/Pharmacy Tech ◆ Dietician 	<ul style="list-style-type: none"> ◆ EMT ◆ Paramedic 	<ul style="list-style-type: none"> ◆ Admitting Clerk ◆ Applied Researcher ◆ Community Services Specialists ◆ Data Analyst ◆ Epidemiologist ◆ Ethicist ◆ Health Educator ◆ Health Information Coder ◆ Healthcare Administrator ◆ Medical Assistant ◆ Medical Biller/Patient ◆ Medical Information Technologist ◆ Medical Librarian/Cybra ◆ Patient Advocates ◆ Public Health Educator ◆ Reimbursement Specialist (HFMA) ◆ Risk Management ◆ Social Worker ◆ Transcriptionist ◆ Unit Coordinator ◆ Utilization Manager 	<ul style="list-style-type: none"> ◆ Biochemist ◆ Bioinformatics Associate ◆ Bioinformatics Scientist ◆ Bioinformatics Specialist ◆ Biomedical Chemist ◆ Biostatistician ◆ Cell Biologist ◆ Clinical Trials Research Associate ◆ Clinical Trials Research Coordinator ◆ Geneticist ◆ Lab Assistant-Genetics ◆ Lab Technician ◆ Microbiologist ◆ Molecular Biologist ◆ Pharmaceutical Scientist ◆ Quality Assurance Technician ◆ Quality Control Technician ◆ Regulatory Affairs Specialist ◆ Research Assistant ◆ Research Associate ◆ Research Scientist ◆ Toxicologist 	<ul style="list-style-type: none"> ◆ Cardiovascular Technologist ◆ Clinical Lab Tech ◆ Computer Tomography (CT) Technologist ◆ Cytogenetic Technologist ◆ Cytotechnologists ◆ Diagnostic Medical Sonographers ◆ Electrocardiographic (ECG) Tech ◆ Electronic Diagnostic (EEG)Technologist ◆ Exercise Physiologist ◆ Geneticist ◆ Histotechnician ◆ Histotechnologist ◆ Magnetic Resonance (MR) Technologist ◆ Mammographer ◆ Medical Technologist / Clinical Laboratory Scientist ◆ Nuclear Medicine Technologist ◆ Nutritionist ◆ Pathologist ◆ Pathology Assistant ◆ Phlebotomist ◆ Positron Emission Tomography (PET) Technologist ◆ Radiologic Technologist/Radiographer ◆ Radiologist 	<ul style="list-style-type: none"> ◆ Athletic Trainer ◆ Chiropractor ◆ Doctor of Medicine ◆ Doctor of Osteopathic Medicine ◆ Doctor of Podiatric Medicine ◆ Massage Therapist ◆ Occupational Therapist ◆ Occupational Therapist Assistant ◆ Physical Therapist ◆ Physical Therapist Assistant ◆ Physician Assistant ◆ Prosthetist/Orthotist ◆ Recreational Therapist ◆ Registered Nurse 	<ul style="list-style-type: none"> ◆ Barber ◆ Cosmetologist, Hairdresser and Hairstylist ◆ Nail Technician, Manicurist and Pedicurist ◆ Shampooer ◆ Skin Care Specialist ◆ Spa Attendant
Foundational Skills								
<p align="center"><i>Technical Skills•Academic Foundations•Communications•Problem Solving and Critical Thinking•Information Technology Applications•Systems• Safety, Health and Environment•Leadership and Teamwork•Ethics and Legal Responsibilities•Career Development•Entrepreneurship</i></p>								

Marketing, Sales & Service

Agriculture

Architecture, Construction, Communications & Transportation

Arts & Humanities

Marketing Sales & Service Pathways

Fashion Marketing
Marketing Communications & Promotion
Marketing & Management
Sports & Event Marketing
Travel Marketing & Lodging Management

Agriculture Pathways

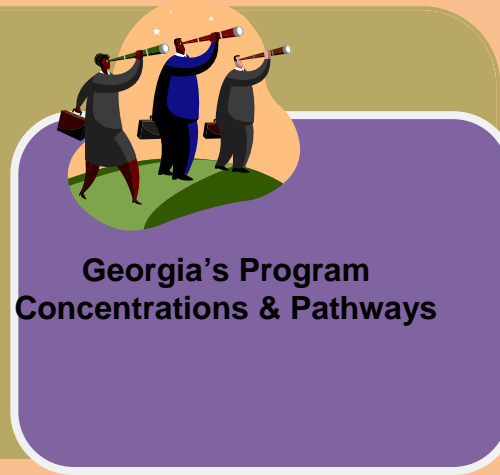
Agribusiness Management
Agriscience
Agricultural Mechanics
Animal Science
Forestry/Natural Resources
Plant Science/Horticulture
Veterinary Science

ACCT Pathways

Aircraft Support
Broadcasting & Digital Media
Construction
Architectural Drawing & Design
Flight Operations
Graphic Communications
Graphic Design
Marine Engine Technology
Metals
Transportation Logistical Operations
(Ground/Marine)Transportation
Logistical Support
(Ground/Marine)
Collision Repair
Climate Control Systems
Technology

Healthcare Science Pathways

Biotechnology Research & Development
Diagnostic Services
Health Informatics
Therapeutic Services-Emergency Services
Therapeutic Services-Medical Services
Therapeutic Services-Nursing
Therapeutic Services-Physical Medicine
Personal Care Services-Cosmetology



Georgia's Program Concentrations & Pathways

Government & Public Safety Pathways

Law & Justice
Homeland Security & Emergency Services
JROTC (4 branches)

Arts & Humanities Pathway

Visual Arts
Performing Arts
Journalism
Foreign Language

FCS Pathways

Consumer Services
Family/Community Services
Interior Design
Nutrition & Food Science

Engineering & Technology Pathway

Electronics
Energy Systems
Engineering
Manufacturing
Engineering, Graphics & Design

Business & Computer Science Pathway

Administrative/ Information Support
Computer Networking
Computer Systems and Support
Computing
Financial Management-Accounting
Financial Management-Services
Interactive Media
Small Business Development

Education Pathways

Early Childhood Education
Teaching As A Profession

Culinary Arts Pathways

Culinary Arts

Healthcare Science
Government & Public Safety
Family & Consumer Sciences

Engineering & Technology

Education

Culinary Arts

Business & Computer Science

WORKSHEET

Assignment

- ✓ Complete the pyramid using **HEALTHCARE SCIENCE** as the **PROGRAM CONCENTRATION**.
- ✓ Select a Peach State Pathway from the chart titled **HEALTHCARE SCIENCE PROGRAM CONCENTRATION**
- ✓ After you have selected the pathway, select a possible occupation from the pathway that might interest you.

GAcademy411 can assist you with selecting your Peach State Pathway. You can find more information under the CAREER PLANNING tab OR click on “Middle School Student” then go to the section titled, “Explore Careers”

At the bottom of that page you will find Georgia’s PROGRAM CONCENTRATIONS. Choose the ones that interest you and begin your investigation into the world of work.

