

Work Values Sorter/GAcollge411 8th Grade Advisement Activity Estimated time: 30Minutes

Georgia Teachers-As-Advisors Framework

Goal 7-1.1 - Create, manage, and enhance a Peach State Portfolio.

- c. Identify and explore selected Peach State Pathways based on individual reports generated by value assessments administered during Grade 7.
- d. Explore specific occupations within a pathway based on individual assessment results

Objectives:

- Students will complete the work values sorter on GAcollge411
- Students will identify three careers that match their interests

Materials:

- Handout, "Work Values Sorter Using GAcollge411"

Activity:

1. *Say:* "Good Morning. Welcome to advisement. Today we are going to talk about your values especially your work values. Last year you learned about your values. Let's see what we can remember.

Ask: *Who can give me a definition of one's values?* (ideas that we believe are important, the things that we rate highly are our values). Some values are listed below:

helping others	having fun
being honest	good health
love of family	beauty
education	liberty
justice	money

Ask the students to add more Add some other values of your own here: hard work, peace, friends, respect, achievement, etc.

2. *Say:* Now let's take our knowledge of values and apply it to the world of work. Divide into groups of 4 (count off by 4s then divide by numbers). *Distribute the handout/worksheet.* In your groups, begin to discuss the values (things that would be important to a person) in the occupations listed on your handout. List reasons one should discover their work values when planning for their career. *Provide "teaching" as an example.* *Say:* First of all, I value first of all education and my independence to run my class using many of my own ideas. I also value achievement---I like the feeling of accomplishment when students achieve.

Occupation	Hint/Value
EXAMPLE: Veterinarian	Accomplishment/Achievement
Animal Scientist	Use your best abilities/Achievement
Animal Caretaker	Fair Management/Working Conditions
Computer Operator	Make your own decisions/Independence
Automobile Mechanic	Salary/Working Conditions
Actor	Accomplishment/Achievement
Childcare Worker	Staying busy/Working Conditions
Chef	Little supervision/Independence
Counselor	Service/Relationship
Model	Prestige/Recognition
Principal	Leadership/Recognition
Dental Hygienist	Service/Relationship

When students have completed the assignment, say: These are reasons one should discover their work-related values:

- ✓ Helps you search for occupations that will motivate you to work
- ✓ Helps you search for occupations that will result in work satisfaction
- ✓ A career choice that is in-line with our core beliefs and values is more likely to be a lasting and positive choice
- ✓ We enjoy doing what is considered important to us

3. Say: Flip over to the back of your handout. I strongly encourage you to complete the WORK VALUES SORTER to identify your primary work values and occupations that match your primary values. The assessment should take you about 6-10 minutes and results can help start to narrow your career-related choices. GAcollege411 will record your results each time to take the assessment. You should take assessments periodically because you grow and change. Remember at the winter of your 8th grade year you will have the opportunity to choose your classes at the high school. It will be important that you have done the education and career exploration and investigation that will provide the information you need to determine your high school program of study. Follow the direction on your handout to find the WORK VALUES SORTER. Have fun learning about yourself! See you next time we meet.

Work Values Sorter using GACollege411

GACollege411 allows middle school students to take the “Work Values Sorter” to assist them with the education and career planning process. By taking the assessment, you will be able to narrow your occupational choices based on the things you think are important to YOU! Occupations are divided into six areas representing primary work values (things that may be important to you in your work) such as:

Achievement - It's very important to you that your work allows you to use your best abilities. You want to see the results of your work and get a feeling of accomplishment.

Recognition - It's very important to you that your work satisfies your need for prestige and leadership opportunities, as well as opportunities for advancement.

Relationships - It's very important to you that you have friendly co-workers. You would like to be of service to others without compromising your sense of right and wrong.

Working Conditions - It's very important to you that your work satisfies your needs in areas like salary, job security and your working style preferences, such as working alone, staying busy all the time or having variety in your work tasks.

Support - It's very important to you to know the company stands behind its workers and has competent, considerate and fair management.

Independence - It's very important to you that your work allows you to make decisions on your own. You want to try out your own ideas and work with little supervision.

List the values you think would be **MOST** important to each one of the occupations below:

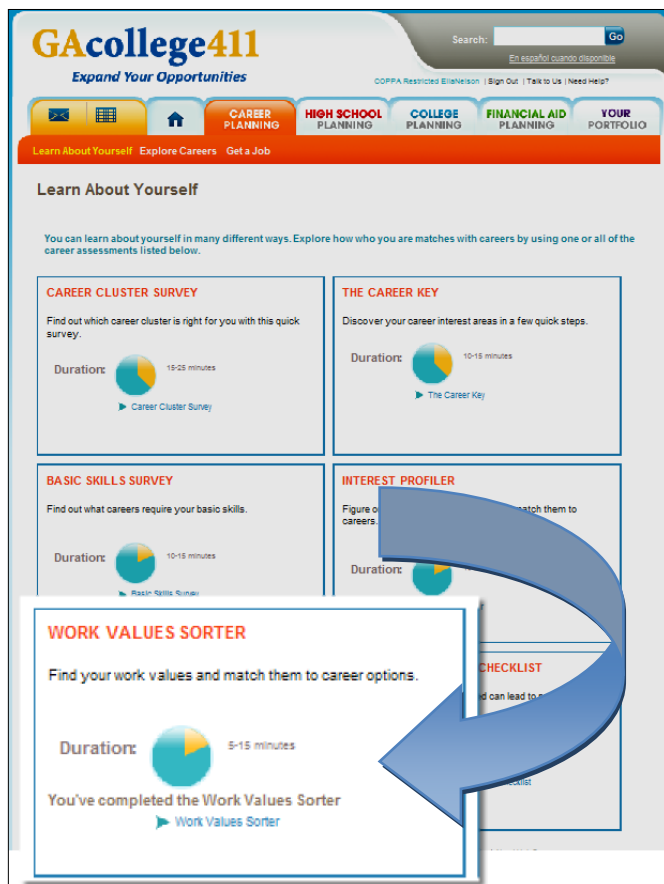
Occupation	Hint/Value
EXAMPLE: Veterinarian	Accomplishment/Achievement
Animal Scientist	
Animal Caretaker	
Computer Operator	
Automobile Mechanic	
Actor	
Childcare Worker	
Chef	
Counselor	
Model	
Principal	
Dental Hygienist	

List reasons one should recognize their values when career planning:



- ✓ Go to "Middle School Student" on the GAcollege411 homepage
- ✓ Go to "Discover a career path that's right for you"
- ✓ Go to "WORK VALUES SORTER"

Take the assessment. It should take you about 6-10 minutes. You will receive your results in six different value categories and matching occupations. If the occupation you were thinking about is not on the list, you can type it in at the top and discover why it did not match. Share your results with your advisor and your parents.



NOTE: Career-related assessments are simple tools to help you narrow your choices. You should use more than one assessment to assist you in your narrowing process. Don't put all your eggs in one basket as the saying goes!